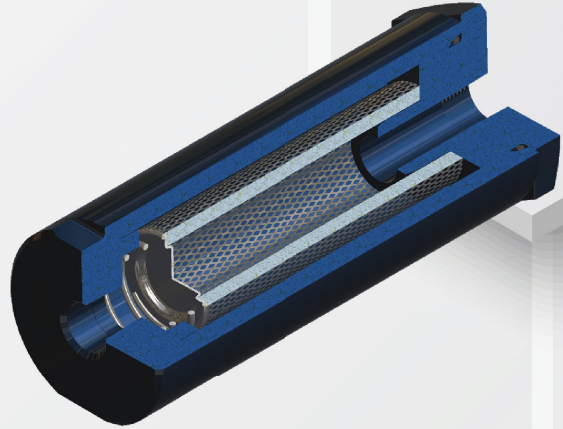


FRH-300116

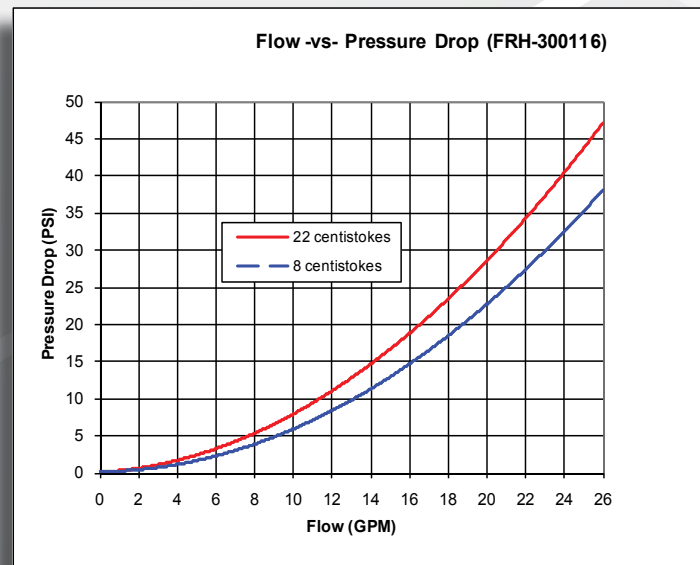
HIGH PRESSURE FILTER

Product Specifications

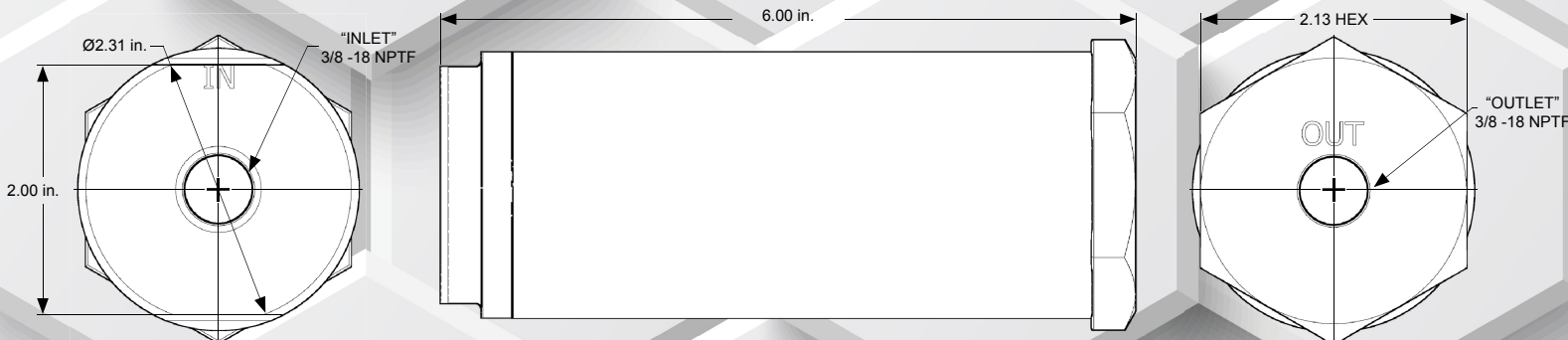
Housing:	Carbon Steel
End Caps:	Carbon Steel
Filter Medium:	Resin Impregnated Paper
Max. Working Pressure:	3000 psi (207 bar)
Max Allowable Pressure Drop:	2500 psi (172 bar)
Weight:	3.9 lbs. (1.7 kg)
Recommended Fluid:	Red hydraulic fluid (MIL-H-5606)
Inlet Connection:	3/8" NPTF
Outlet Connection:	3/8" NPTF
Replacement Filter:	FE-200575
Micron Rating:	40



Also offered with
SAE connections
KTI Part Number:
FRH-308273



General Dimensions



SSFRH300116_C